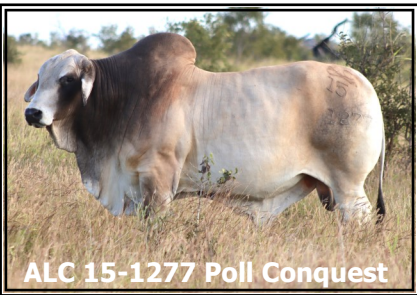


# All Sires List 2024



**ALC**  
BRAHMANS

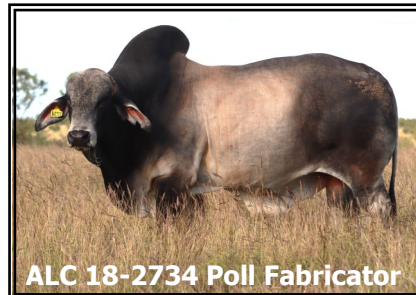
Economically Proven—Predictable, Fertile, Grass-Raised Genetics



ALC 15-1277 Poll Conquest



ALC 17-2367 Poll Entity



ALC 18-2734 Poll Fabricator



ALC 19-3206 Poll Genuine



ALC 19-3250 Poll Gesture



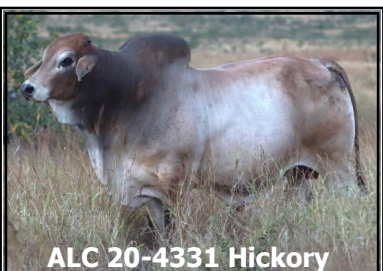
ALC 20-4376 Highcaliber

**Sires of the S'23 ALC Bulls for sale at 2024 ALC Bull Sale**

**REAL PROGRESS - MAKING IT HAPPEN**  
Sire selection represents the major directional force available to the beef producer for creating change in his herd.



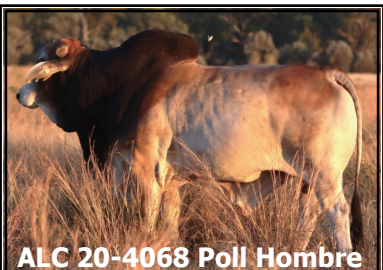
ALC 19-3418 Gold Genius



ALC 20-4331 Hickory



ALC 19-3421 Gold Fever



ALC 20-4068 Poll Hombre



ALC 20-3972 Hallmark



ALC 19-3696 Graviton



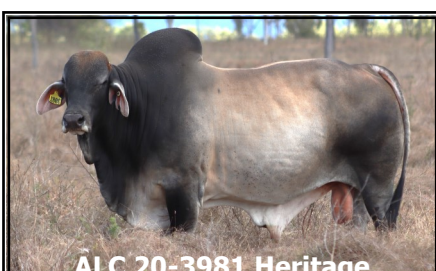
ALC 19-3573 Poll Guardian



ALC 19-3427 Goldenpoint



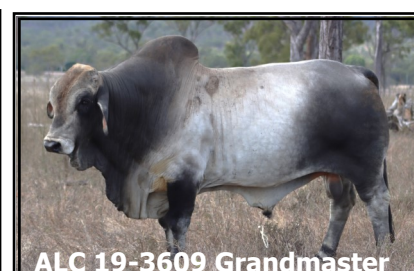
ALC 20-4035 Hilton



ALC 20-3981 Heritage



ALC 20-3917 Poll Harmony



ALC 19-3609 Grandmaster



ALC 19-3428 Goldpass

ALC All-Sires

Sire #	NAME	Puberty		Col	Hrn	April 2024 GROUP EBV'S					Cent	Live	SIRE	DAM	Age	#	Calv.	DTC	GSIRE	GDAM	Age	#	Calv.
		age	kg			200	400	600	SS	DTC	Prod	Ex			1st calf	calv	Int.	EBV			1st calf	calv	Int.
ALC 15-1277	Poll Conquest	13	313	RD	P	20	34	60	3.7	-17	102	93	12-0019	12-0059	3.0	3	410	-7.7	05-2913	03-1574	2.8	8	393
ALC 15-1349	Contender	14	307	LRD	D	17	27	34	2.7	-16	54	72	09-6647	09-6658	3.0	8	367	-19.4	06-3639	06-3871	2.9	3	425
ALC 16-1662	Poll Distinction	14	308	GY	P	12	21	27	3.9	-14	44	67	11-9055	09-6834.	3.0	8	368	-23.9	06-3670	06-4335	2.7	1	
ALC 16-1664	Poll Diligence	14	331	GY	P	22	30	46	3.9	-11	68	64	11-9055	12-0305	2.9	10	369	-17.0	08-6019	07-4583	3.0	10	367
ALC 16-1773	Devine XL	14	291	GY	D	29	38	61	3.5	-19	102	98	09-6647	13-0459	<b>2.0</b>	8	360	-26.4	06-4269	03-1982	2.8	13	365
ALC 17-2157	Elaborate	11	284	GY	D	21	28	52	3.0	-17	94	94	14-0757	14-0919	3.0	4	371	-13.1	06-3751	06-3890	3.2	7	363
ALC 17-2161	Poll Encore	11	300	GY	PP	19	27	38	4.1	-15	60	71	14-0887	14-1171	2.7	6	367	-13.2	06-3751	03-1785	3.1	9	373
ALC 17-2181	Emphatic	12	322	GY	D	10	16	32	2.4	-21.3	78	91	11-9055	09-6635	3.0	8	368	-28.0	06-3799	06-4235	2.8	1	
ALC 17-2211	Poll Elite	12	319	CR	S	5	10	24	3.8	-16	50	78	11-9055	07-4542	3.1	10	369	-18.9	03-1580	02-B0590	3.0	3	367
ALC 17-2234	Poll Enrich	11	326	GY	P	17	31	39	2.2	-14	67	72	11-9055	12-0305	2.9	10	369	-17.0	08-6019	07-4583	3.0	10	367
ALC 17-2367	Poll Entity	10	300	LR	P	22	35	58	3.7	-14	97	86	11-9055	09-7598	2.7	13	331	-22.1	01-9711	05-3512	3.0	4	354
ALC 18-2607	Poll Factor	14	309	GY	P	10	13	17	2.7	-20	40	73	15-1220	15-1296	2.9	7	369	-22.0	09-6647	09-6602	3.1	9	366
ALC 18-2655	Fabuloso	13	327	CR	D	30	47	64	3.5	-16	100	81	15-1297	14-0938	<b>2.1</b>	8	417	-15.7	11-9130	11-8843	3.0	9	364
ALC 18-2734	Poll Fabricator	15	315	RD	P	17	21	30	1.0	-14	44	66	14-0881	12-0267	<b>2.1</b>	8	407	-13.5	08-6019	07-4770	2.9	6	364
ALC 18-2860	Fernando	13	343	RD	D	23	44	64	2.6	-21	113	105	09-7472	13-0459	<b>2.0</b>	8	360	-26.4	06-4269	03-1982	2.8	13	365
ALC 18-2914	Poll Force	13	287	RD	P	28	40	54	2.1	-17	85	81	13-0478	14-1090	2.8	4	366	-20.1	07-5005	06-3704	3.1	12	360
ALC 18-3083	Poll Foresight	11	280	RD	P	13	14	26	4.5	-17	55	78	14-0757	14-1164	2.9	4	356	-12.7	06-3751	07-4497	3.0	8	379
ALC 19-3206	Poll Genuine	12	300	RD	S	17	29	46	6.1	-19	82	87	16-1662	15-1370	3.0	7	358	-18.0	09-6647	06-4892	2.8	7	368
ALC 19-3211	Gallant	13	306	BLK	D	29	43	62	3.5	-14.4	99	85	16-1775	12-0305	2.9	10	369	-17.0	08-6019	07-4583	3.0	10	367
ALC 19-3236	Gamechanger	12	277	CR	D	26	35	57	4.6	-20	95	90	16-1775	13-0459	<b>2.0</b>	8	360	-26.4	06-4269	03-1982	2.8	13	365
ALC 19-3248	General	15	314	RD	D	28	43	58	2.1	-17	100	95	15-1297	10-7978	2.9	8	365	-17.8	02-0556	06-3954	2.9	3	390
ALC 19-3250	Poll Gesture	14	322	CR	P	27	43	65	3.9	-19	114	97	15-1277	09-6979	2.9	9	366	-24.8	04-2372	05-3176	2.8	7	387
ALC 19-3319	Poll Glory	14	283	GY	P	29	44	79	2.9	-18	133	107	15-1277	15-1586	2.7	5	366	-16.0	10-8573	09-7200	2.9	4	396
ALC 19-3418	Gold Genius (ET)	16	283	RD	D	26	41	57	2.8	-17	92	84	127	09-6834.	3.0	8	368	-23.9	06-3670	06-4335	2.7	1	
ALC 19-3421	Gold Fever (ET)	15	280	GY	D	23	31	41	2.1	-14	54	57	T32	11-8914.	<b>2.3</b>	8	356	-17.0	04-2637	07-4729	2.9	5	363
ALC 19-3427	Goldenpoint (ET)	13	308	CR	D	20	31	43	2.9	-15	60	64	T32	11-8914.	<b>2.3</b>	8	356	-17.0	04-2637	07-4729	2.9	5	363
ALC 19-3428	Goldpass (ET)	14	312	CR	D	25	40	50	2.3	-11	64	57	T32	11-8914.	<b>2.3</b>	8	356	-17.0	04-2637	07-4729	2.9	5	363

Economically Proven - Predictable, Fertile, Grass Raised Genetics ...

ALC All-Sires

Sire #	NAME	Puberty		Col	Hrn	April 2024 GROUP EBV'S					Cent	Live	SIRE	DAM	Age	#	Calv.	DTC	GSIRE	GDAM	Age	#	Calv.
		age	kg			200	400	600	SS	DTC	Prod	Ex			1st calf	calv	Int.	EBV			1st calf	calv	Int.
ALC 19-3464	Poll Genepool	13	292	LR	PP	30	50	74	2.7	-7.9	94	65	15-1277	15-1214	3.0	5	371	-6.7	10-7694	05-3290	2.9	12	362
ALC 19-3516	Graduate	12	327	RD	D	19	35	42	4.8	-19	79	87	14-1037	11-9644	2.7	11	370	-16.4	07-5258	06-3904	3.0	3	406
ALC 19-3573	Poll Guardian	13	301	RD	S	22	36	55	4.7	-17	91	86	15-1277	15-1333	2.9	4	363	-11.4	09-6647	09-6584	3.0	9	365
ALC 19-3609	Grandmaster	13	351	RD	D	33	55	75	4.4	-12	109	81	16-1754	16-2037	2.7	2	435	-16.8	12-0229	13-0438	2.1	7	372
ALC 19-3696	Graviton	11	303	GY	D	26	46	66	5.5	-14	110	92	14-1037	14-0873	2.1	3	557	-1.1	11-9055	11-9164	2.9	1	
ALC 19-3820	Poll Gusto	11	301	LR	P	19	27	38	5.0	-17	68	79	14-1037	14-1068	2.8	3	393	-14.3	10-7694	09-7055	2.9	4	371
ALC 20-3917	Poll Harmony	13	328	GY	PP	17	33	42	3.6	-24	89	101	17-2371	16-1931	2.8	6	365	-27.4	13-0383	14-1036	2.0	3	352
ALC 20-3972	Hallmark	13	344	CR	D	26	39	51	3.2	-24	105	107	16-1662	09-6821	3.0	11	363	-29.7	06-3799	06-4892	2.8	7	368
ALC 20-3975	Highlight	11	337	GY	D	27	43	59	4.3	-18	106	93	14-1037	14-0839	3.0	5	376	-18.4	06-3751	04-2764	2.8	14	364
ALC 20-3981	Heritage	11	334	RD	D	21	28	50	5.2	-18	88	87	14-1037	15-1370	3.0	7	358	-18.0	09-6647	06-4892	2.8	7	368
ALC 20-3986	Honcho	12	325	CR	D	22	28	35	3.0	-14.4	88	79	16-1664	15-1393	3.0	6	362	-15.2	11-8686	09-6747	3.0	5	370
ALC 20-3987	Highclass	11	330	RD	D	32	50	68	3.1	-15	106	84	14-1037	15-1455	2.9	7	363	-17.6	307/9	13-0687	1.9	10	359
ALC 20-3988	Poll Honour	12	337	LR	P	24	39	47	4.2	-19	86	90	16-1662	15-1359	2.9	4	389	-18.6	11-9116	09-6529	3.0	4	379
ALC 20-4035	Hilton	11	304	GY	D	21	31	48	5.0	-20	90	90	16-1664	15-1442	2.8	7	368	-25.2	09-6960	10-8367	2.8	9	369
ALC 20-4068	Poll Hombre	13	314	LR	S	19	29	53	3.5	-20	96	96	14-0832	14-1064	2.0	8	405	-18.7	07-5005	05-3029	2.9	7	375
ALC 20-4128	Poll Heaven	13	337	GY	P	32	53	70	3.1	-25	138	118	14-0832	16-2051	2.8	5	361	-28.7	11-8930	12-0141	2.1	11	363
ALC 20-4204	Houdini	12	332	GY	D	22	31	46	5.3	-21	97	100	16-1664	13-0447	3.1	9	367	-19.2	06-3751	08-5859	2.1	9	408
ALC 20-4331	Hickory	11	338	RD	D	37	51	74	5.6	-16	116	89	15-1335	14-1033	2.1	9	355	-14.8	05-3066	10-8002	3.0	4	369
ALC 20-4376	Highcaliber	10	305	GY	D	28	38	61	4.3	-22	122	115	17-2157	17-2242	2.0	5	361	-22.1	13-0629	12-0094	2.0	7	371
ALC 20-4512	Poll Harvest	11	297	GY	P	17	26	47	3.5	-17	83	87	17-2307	18-2591	2.2	1		-12.5	15-1277	15-1358	2.9	5	380
ALC 21-4527	Poll Icon	12	346	RD	S	20	34	39	4.6	-26	89	106	18-2860	18-3009	2.8	4	367	-23.3	14-1037	15-1239	3.2	7	357
ALC 21-4562	Poll Impact	11	362	RD	PP	27	46	69	5.2	-18	118	100	15-1277	14-1056	2.9	6	360	-10.8	11-9130	12-0050	2.1	2	736
ALC 21-4564	Poll Invitation	12	342	RD	S	21	34	55	1.8	-23	108	103	15-1277	09-7598	2.7	13	331	-22.1	01-9711	05-3512	3.0	4	354
ALC 21-4588	Poll Intent	12	328	GY	S	20	27	51	3.1	-15	79	79	18-2953	18-2644	3.0	2	374	-17.6	15-1220	15-1512	2.8	5	363
ALC 21-4599	Poll Insight	12	362	GY	P	24	45	66	3.6	-19	118	105	15-1277	17-2291	1.9	6	365	-20.0	13-0629	09-6498	2.9	9	366
ALC 21-4608	Impeccable	13	381	RD	D	40	48	67	3.6	-11	94	67	15-1335	18-2997	2.8	1		-16.7	14-0757	12-0204	2.9	5	363
ALC 21-4626	Infusion	14	397	DGY	P	24	38	49	3.3	-13	73	71	17-2161	13-0403	2.0	10	364	-24.1	04-2351	02-0954	2.9	12	376

Economically Proven - Predictable, Fertile, Grass Raised Genetics ...

ALC All-Sires

Sire #	NAME	Puberty		Col	Hrn	April 2024 GROUP EBV'S					Cent	Live	SIRE	DAM	Age	#	Calv.	DTC	GSIRE	GDAM	Age	#	Calv.
		age	kg			200	400	600	SS	DTC	Prod	Ex			1st calf	calv	Int.	EBV			1st calf	calv	Int.
ALC 21-4641	Innovator	13	343	LR	D	14	21	26	4.0	-21	57	82	15-1335	18-3061	2.7	3	405	-22.0	12-0229	14-0839	3.0	5	376
ALC 21-4668	Poll Inspire	13	383	GY	P	28	44	63	2.1	-20	111	101	17-2371	08-5624	2.2	13	362	-23.3	05-2980	05-3028	2.9	5	375
ALC 21-4751	Impression	12	367	RD	D	22	36	58	5.6	-22	108	103	17-2181	14-0980	3.0	5	358	-17.4	11-9116	12-0108	2.1	2	411
ALC 21-4848	Poll Insentive	13	315	GY	S	4	14	28	2.7	-20	61	90	17-2211	17-2145	2.0	5	360	-22.1	14-1037	14-0935	2.9	8	372
ALC 21-4870	Poll Influence	10	300	CR	P	19	29	42	4.7	-17	77	82	18-3047	19-3447	2.0	1		-11.8	16-1662	15-1192	2.0	8	369
ALC 21-4919	Poll Idol	12	343	LR	S	26	40	57	3.6	-19	108	101	17-2367	15-1532	2.0	7	355	-14.8	11-9130	07-4497	3.0	8	379
ALC 21-4923	Illustrious	12	354	RD	D	16	25	48	3.5	-19	95	99	17-2211	16-1656	2.1	7	369	-17.6	10-7785	12-0216	3.0	3	353
ALC 21-4955	Poll Interpreter	12	324	GY	P	19	30	38	3.6	-13	55	63	17-2161	07-4387	3.0	13	368	-18.5	03-1639	99-8444	3.1	6	353
ALC 22-5186	Judicious	10	325	CR		31	48	55	2.7	-16	86	76	19-3236	19-3590	2.0	4	354	-20.2	14-1037	13-0467	2.1	9	358
ALC 22-5288	Jim-dandy	9	295	CR		21	38	52	5.0	-17	87	85	19-3696	19-3677	2.0	4	355	-22.8	14-0832	14-0835	3.0	7	368
ALC 22-5317	Poll Jewel	10	352	GY	S	36	61	81	4.0	-13	119	81	19-3696	19-3830	2.8	3	381	-12.0	14-0887	13-0593	3.0	5	375
ALC 22-5383	Poll Jonas	13	344	RD	S	13	27	40	3.5	-26	96	108	15-1277	16-2051	2.8	5	361	-28.7	11-8930	12-0141	2.1	11	363
ALC 22-5390	Poll Joyous	10	304	GY	S	18	30	45	3.7	-22	89	98	17-2367	17-2522	1.9	6	350	-24.2	13-0439	13-0657	2.8	8	370
ALC 22-5481	Poll Journey	11	330	CR	S	29	44	72	4.3	-23	135	113	19-3250	19-3239	3.0	3	359	-26.7	16-1775	15-1561	2.8	7	359
ALC 22-5507	Poll Jackpot	12	336	GY	PP	22	34	42	3.3	-17	72	77	19-3820	19-3433	3.0	3	358	-18.4	T32	09-7598	2.7	11	365
ALC 22-5523	Poll Joyride	11	341	CR	S	24	38	63	3.4	-24	121	113	19-3250	19-3507	2.9	3	357	-25.4	15-1349	15-1456	2.0	8	359
ALC 22-5555	Poll Jazzy	12	384	CR	S	38	60	96	4.3	-12	144	98	19-3609	19-3293	3.0	3	353	-17.5	15-1277	15-1339	2.9	3	368
ALC 22-5671	Poll Journal	10	316	RD	P	24	42	66	3.8	-18	111	95	17-2161	18-2628	2.2	5	349	-22.6	15-1277	15-1554	2.8	3	364
ALC 22-5764	Jeremias	12	360	CR		32	48	60	3.1	-11	80	65	9435	17-2386	2.0	5	452	-16.8	12-0229	11-9608	2.7	7	369
ALC 22-5765	Poll Jubilee	12	360	GY	PP	23	39	54	3.6	-16	91	86	17-2161	18-2764	3.1	3	370	-14.7	14-0881	14-0919	3.0	4	371
ALC 22-5842	Jamboree	9	299	GY		16	26	40	5.5	-16	75	82	19-3696	19-3494	2.0	4	357	-15.7	16-1662	14-0979	3.0	4	374
ALC 22-5877	Poll Jampacked	12	329	RD	PP	23	34	53	2.3	-13	84	80	16-1664	18-2658	2.2	4	345	-16.5	15-1277	15-1254	3.0	7	364
ALC 22-5881	Poll Jetset	10	295	RD	PP	19	25	38	3.6	-13	56	65	16-1664	18-2623	2.2	4	346	-17.6	15-1277	15-1581	2.7	3	392
ALC 23-5947	Kasper	12	343	G		30	49	69	5.6	-18.6	118	99	19-3609	13-0721	2.8	8	363	-22.9	09-6960	03-1785	3.1	9	373
ALC 23-6083	Kahlua	10	350	LR		23	38	51	4.1	-17.7	86	86	19-3427	19-3749	2.8	3	374	-19.8	15-1349	11-9291	2.9	9	365
ALC 23-6126	Konrad	10	303	G		20	31	49	3.8	-21.0	89	90	19-3427	19-3239	3.0	3	359	-26.7	16-1775	15-1561	2.8	7	359
ALC 23-6171	Poll Kindle	13	340	F	S	25	35	53	3.2	-18.0	94	91	20-3988	21-4674	2.0	2	373	-18.1	17-2181	15-1586	2.7	5	366

Economically Proven - Predictable, Fertile, Grass Raised Genetics ...

**ALC All-Sires**

Sire #	NAME	Puberty		Col	Hrn	April 2024 GROUP EBV'S					Cent Live		SIRE	DAM	Age 1st calf	# calv	Calv. Int.	DTC EBV	GSIRE	GDAM	Age 1st calf	# calv	Calv. Int.
		age	kg			200	400	600	SS	DTC	Prod	Ex											
ALC 23-6173	Poll Kevlar	12	318	R	S	16	29	40	3.4	-20.9	81	93	20-4068	21-4840	2.0	2	361	-21.1	17-2234	15-1521	2.8	7	366
ALC 23-6215	Kakoda	11	325	F		19	33	44	3.3	-20.9	86	91	19-3250	19-3343	3.0	3	366	-21.4	15-1297	15-1433	2.8	6	365
ALC 23-6219	Poll Kempt	11	354	F	S	24	39	54	3.1	-18.4	95	89	20-4128	19-3741	1.9	2	681	-10.4	15-1349	14-0874	2.0	4	379
ALC 23-6239	Poll Knight	11	342	DG	P	26	42	60	4.5	-25.5	126	117	20-4128	20-4489	2.8	2	355	-23.9	17-2307	18-3054	2.0	4	470
ALC 23-6284	Poll Kinetic	10	339	R	S	19	31	53	4.6	-22.4	108	110	15-1277	18-3071	1.9	4	349	-25.9	14-0757	14-0807	2.1	9	360
ALC 23-6301	Poll Kingdom	11	360	G	PP	24	37	59	3.1	-17.5	103	95	17-2367	17-2337	1.9	5	364	-21.5	14-0832	14-1091	2.9	4	355
ALC 23-6357	Poll Keynote	12	343	R	P	19	30	41	2.7	-20.8	80	93	18-2734	16-1931	2.8	6	365	-27.4	13-0383	14-1036	2.0	3	352
ALC 23-6425	Poll Koda	12	324	G	PP	20	30	47	3.1	-19.0	84	87	20-4512	20-4063	3.0	2	353	-21.5	14-0832	12-0317	2.8	7	365
ALC 23-6441	Poll Keynote	10	308	LR	S	20	32	46	4.9	-20.0	89	92	17-2367	19-3677	2.0	4	355	-22.8	14-0832	14-0835	3.0	8	368
ALC 23-6444	Poll Keeper	10	329	CR	PP	22	26	46	3.3	-14.9	73	79	18-2734	18-2624	2.2	5	362	-13.2	15-1306	15-1606	2.7	1	
ALC 23-6464	Keystone	10	340	G		25	42	55	3.5	-15.6	85	79	19-3427	19-3610	3.0	3	370	-17.0	16-2039	17-2192	2.0	5	455
ALC 23-6477	Poll Kingpin	11	323	R	S	26	39	61	4.1	-21.2	110	101	19-3250	19-3640	2.9	3	360	-22.3	16-1773	17-2416	1.9	6	366
ALC 23-6485	Poll Kalon	14	382	G	S	24	42	55	3.3	-18.9	99	96	19-3250	19-3608	2.9	2	380	-20.2	15-1220	14-0807	2.1	9	360
ALC 23-6494	Poll Kendrick	11	317	R	PP	20	33	46	4.0	-17.9	81	85	19-3250	18-2758	2.2	4	474	-15.8	14-0881	14-0934	2.9	8	365
ALC 23-6508	Kindred	12	330	G		23	40	54	3.9	-19.3	98	99	20-3987	20-4038	2.0	3	359	-22.8	16-1662	13-0590	2.1	10	356
ALC 23-6520	Poll Keg	13	391	G	S	29	48	72	3.0	-18.7	124	105	19-3319	19-3613	3.0	2	390	-20.9	16-2039	17-2337	1.9	5	364
ALC 23-6526	Poll Kinship	11	284	F	PP	21	29	53	3.3	-15.9	89	85	17-2367	19-3689	2.0	5	348	-16.7	14-0832	15-1382	3.0	2	393
ALC 23-6563	Poll Kernel	10	350	R	PP	27	43	69	3.4	-15.8	114	92	17-2367	17-2186	2.1	6	365	-18.6	13-0383	10-8165	2.9	10	366
ALC 23-6605	Poll Kahuna	9	299	G	S	29	42	66	7.2	-22.1	130	114	20-4204	21-4817	2.0	2	379	-18.8	18-2620	18-2680	3.0	4	361
ALC 23-6625	Poll Keanu	13	325	F	S	31	48	63	5.3	-16.1	104	89	20-3988	21-4624	2.2	2	380	-11.3	15-1335	18-3072	2.7	1	
ALC 23-6683	Keensight	10	323	G		25	43	63	5.6	-19.5	117	104	17-2330	19-3284	2.2	3	364	-17.3	15-1277	14-0934	2.9	8	365
ALC 23-6721	Poll Kandy	12	346	G	S	25	47	65	3.3	-19.7	116	104	19-3250	19-3547	3.0	3	362	-21.8	14-1037	13-0590	2.1	10	356
ALC 23-6737	Poll Kudos	11	285	R	PP	26	37	65	4.4	-21.6	120	111	20-4068	21-4991	2.1	2	333	-21.5	18-2941	18-2884	1.9	5	365